

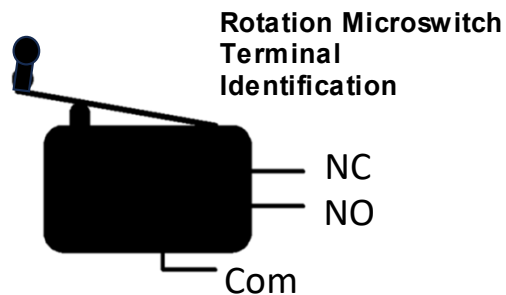
	MCB 3 thru 5.0	TCB 6.0 thru 6.4
18 VAC	3 & 2	1 & 2
Red Lamp	R & C	R & 0
Green Lamp	G & C	G & 0
Card Reader	A & B	T & 0
Rotation Sw.	L & C	M & 0
FL Solenoid	5 & 4	L & 0
FS Solenoid	5 & 4	S & 0

Pushbuttons

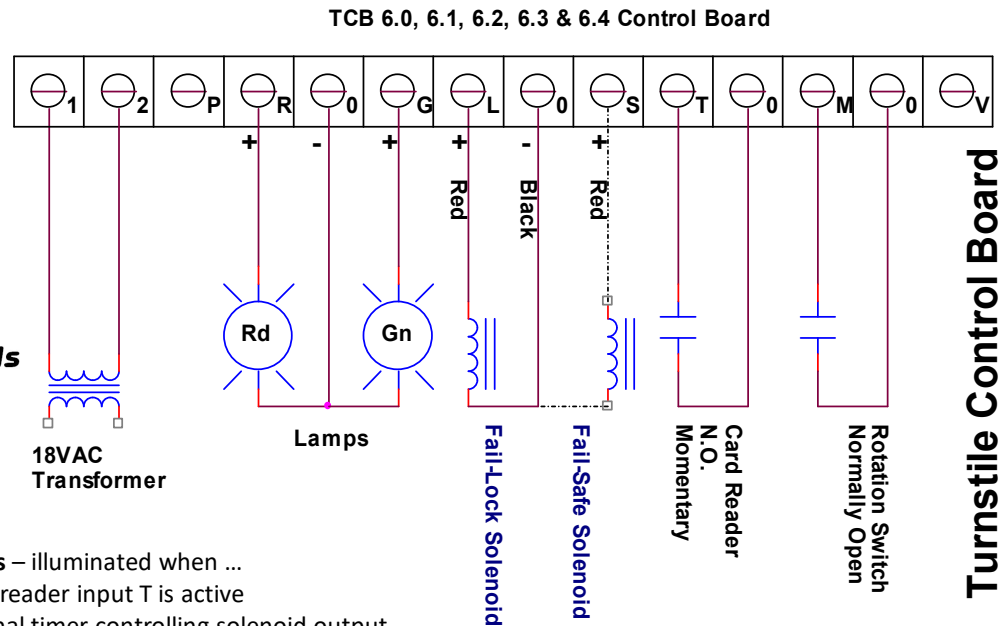
Tomsed/Boon Edam configuration: The red pushbutton simulates a card reader signal by shorting terminals T & 0. The black pushbutton simulates a rotation microswitch reset by shorting terminals M & 0

Pupkit configuration: The red pushbutton performs a direct activation of the on-board relay by shorting terminals V & 0. (U2 required)

JP1: With jumper in place, the pulse relay option is disabled. This is the preferred operating state and should only be removed if your card reader timing is so long as to permit more than one entry



When Using TCB 6.x to replace previous versions, move wire from NC to NO



Turnstile Control Board Model TCB 6.0 - 6.4

LED Indicators – illuminated when ...
 Yellow – Card reader input T is active
 Green – Internal timer controlling solenoid output
 Red – Direct solenoid control input V is active (U2)
 Blue – Rotation switch input M is active (TCB 6.4)

Reconfigure – Remove chips U4 & U3. Rotate 6 pin chip so index dot/notch is down and place in socket U2

